

**Innovative tools for safe and ergonomic work**

## Veiligheids- en constructieattest Voor handgereedschap

Prosave Consulting bvba bevestigt dat de Handmate push en pull handgereedschap bestaande uit:

- Telescopische of enkelvoudige steel in glasvezel en aluminium
- Grijp- of duwtool in staal en aluminium

<sup>1</sup>Onderworpen werd aan trek en buigtesten, uitgevoerd door het Belgisch Instituut voor Lastechniek, waarvan de resultaten vermeld zijn in rapport 18/049 en 18/386, eveneens

<sup>2</sup>Onderwerp is van een risicoanalyse gebaseerd op de norm EN ISO 12100:2010, waarvan de resultaten zijn opgenomen in het veiligheidsdossier 1811187-01.

<sup>3</sup>Vergezeld wordt van een handleiding die de resultaten van de veiligheidsstudie weergeeft.

Product: **Handgereedschap**  
Type(s): **Handmate**  
Fabrikant: **Dafco NV**  
Adres: **Sluis 2D2 Bus 4  
9810 Eke  
België**

**PROSAVE**  
progress in safety



Dirk Van Mechelen  
Manager Prosave

Datum  
Document

November 5, 2018  
1811187-00

Certification EN ISO 12100:2010

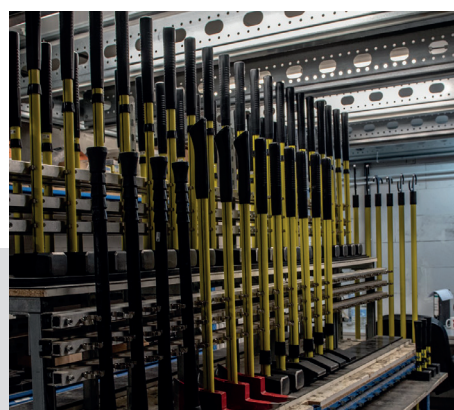
## Safe and ergonomic work with Handmate

Certified handtools: 1811187-00.

- These tools are NO lifting or hoisting tools.
- Designed for use in ambient temperatures of -30°C to 80°C.
- These tools must always be protected against the influence of chemicals, sharp objects, vibrations, shocks and electrical voltages. Otherwise the hand tool can be damaged and therefore impair its function.
- When using these tools always consult the applicable safety regulations of the working environment.
- Always check the environment in which the hand tools are used: adequate lighting, work floor free of obstacles, dirt, anti-slip, stairs, level differences, ... This prevents the risk of falling and jamming!
- Access to the work zone: with the presence of the operator and possibly supervisor.
- Periodic inspection of the hand tools is not compulsory. Our advice is a periodic check by the safety officer and/or operator. Obligation to report damage to or missing parts of the hand tool.

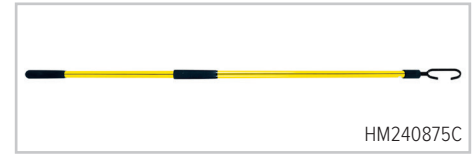
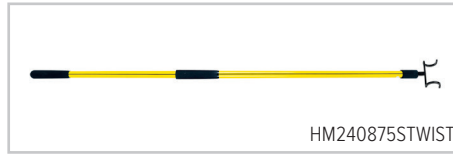
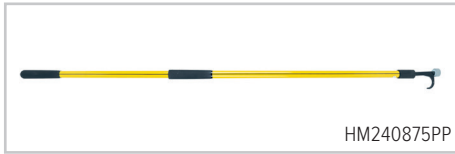
Table with isometric forces for work situations that were taken into account

MOVEMENT	MAXIMUM POWER in KG
BENT ARM UP (1 ARM)	5
BENT ARM DOWN (1 ARM)	7,5
BENT ARM OUT (1 ARM)	5,5
BENT ARM IN (1 ARM)	7,5
PUSHING (WITH HOLE BODY)	20
PULLING (WITH HOLE BODY)	14,5

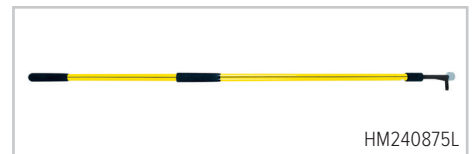
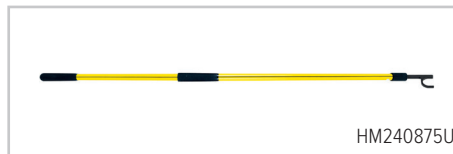
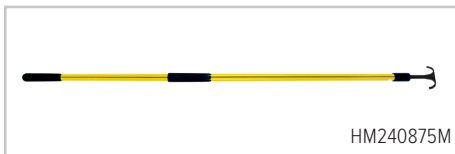


Own production and assembly in Belgium.

## HANDMATE HEAVY DUTY FIXED LENGTH



- Classic TCP (Tension-Continuous-Parallel) Nuplaglass handles exceed all Federal Standards and are made of poltruded structural fibreglass that is composed of millions of continuous parallel fibreglass strands cured under tension in a thermosetting resin through a microwave procedure (US patent).
- Optimum strength-to-weight ratio and reduced transfer of vibrations
- Excellent dielectric properties and anti-static



When using this hand tool, the most correct ergonomic position of the operator and the frequency of the operations must always be taken into account. The Handmate tools were designed following the EN 1005-3 and ISO 11228-2 standard.



## HANDMATE TELESCOPIC TOOL

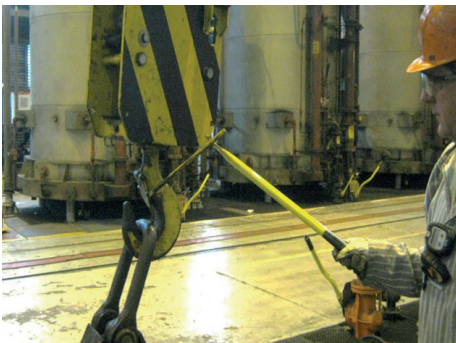
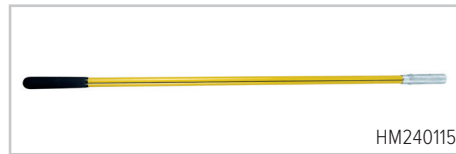


- Telescopic fibreglass handle
- 3 Heavy duty locks (polymere/metal)
- Electrically non-conductive, chemical resistant
- Perfect for less heavy work, easy to handle (also with 1 hand)
- MOBILE = transferable to different locations

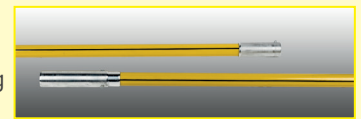


**WE CAN DEVELOP CUSTOMIZED TOOLS FOR SPECIFIC PROBLEMS AND WORKING SITUATIONS.**

# HANDMATE HEAVY DUTY NUPOLE CLICK SYSTEM



- FIX = stationary at a fixed location
- Interchangeable heads
- Nupla fibreglass handle
- Tool head and handle with quick connect fitting
- Handle with butt grip
- Handles available in different lengths



# HANDMATE INTERCHANGEABLE HOOKS - STEEL or ALUMINIUM



- Fit to Handmate Heavy Duty Tools
- Fit to Handmate Telescopic Tools
- Heads/hooks in steel or aluminium
- Connector pieces in aluminium

REFERENCE	DESCRIPTION	LENGTH in CM	WEIGHT in G
<b>HANDMATE HEAVY DUTY FIXED LENGTH</b>			
HM240875PP	HANDMATE P&P STICK FIXED LENGTH 1.9M	190	1800
HM240875C	HANDMATE C HOOK FIXED LENGTH 1.9M	190	1800
HM240875M	HANDMATE M HOOK FIXED LENGTH 1.9M	190	1800
HM240875S	HANDMATE S HOOK FIXED LENGTH 1.9M	190	1800
HM240875STWIST	HANDMATE S HOOK TWISTED FIXED LENGTH 1.9M	190	1800
HM240875L	HANDMATE L HOOK WITH TIP FIXED LENGTH 1.9M	190	1800
HM240875U	HANDMATE U HOOK FIXED LENGTH 1.9M	190	1800
HM240876	HANDMATE P&P STICK SHORT 76CM	76	900
HM240876C	HANDMATE C HOOK SHORT 76CM	76	900
HM240876M	HANDMATE M HOOK SHORT 76CM	76	900
HM240876S	HANDMATE S HOOK SHORT 76CM	76	900
HM2408350S	HANDMATE S HOOK 350CM	350	3000
HM240895S	HANDMATE S HOOK 95CM	95	1100
HM240895U	HANDMATE U HOOK 95CM	95	1100
HM240895X	HANDMATE X HOOK 95CM	95	1100
HM2408350X	HANDMATE X HOOK 350CM	350	3000
HM2408350PP	HANDMATE P&P STICK 350CM	350	3000
HM240895PP	HANDMATE P&P STICK 95CM	95	1100
HM240895PPALU	HANDMATE P&P STICK 95CM ALU	95	1030
<b>HANDMATE HEAVY DUTY NUPOLE CLICK SYSTEM</b>			
HM240114	HANDMATE P&P STICK NUPOLE HEAD	150	1450
HM240114C	HANDMATE C HOOK NUPOLE HEAD	150	1450
HM240114U	HANDMATE U HOOK NUPOLE HEAD	150	1450
HM240114L	HANDMATE L HOOK NUPOLE HEAD WITH TIP	150	1450
HM240114S	HANDMATE S HOOK NUPOLE HEAD	150	1450
HM240114STWIST	HANDMATE S HOOK TWISTED NUPOLE HEAD	150	1450
HM240114X	HANDMATE X HOOK NUPOLE HEAD	150	1450
HM240115	HANDMATE NUPOLE BUTT GRIP	150	1200
HM240120	HANDMATE FIXED LENGTH 1.9M REPLACEABLE HOOK	190	1800
HM240121	HANDMATE FIXED LENGTH 0.95M REPLACEABLE HOOK	95	850
<b>HANDMATE TELESCOPIC TOOL</b>			
HMTL3L1540HD	HANDMATE TELESCOPE 3 LOCKS HD 1540	60/155	850
<b>HANDMATE INTERCHANGEABLE HOOKS – STEEL or ALUMINIUM</b>			
HMRHC	HANDMATE REPLACEABLE HEAD C HOOK	15	270
HMRHM	HANDMATE REPLACEABLE HEAD M HOOK	15	260
HMRHPP	HANDMATE REPLACEABLE HEAD PP HOOK	15	250
HMRHS	HANDMATE REPLACEABLE HEAD S HOOK	15	230
HMRHCALU	HANDMATE REPLACEABLE HEAD C HOOK ALU	15	200
HMRHMALU	HANDMATE REPLACEABLE HEAD M HOOK ALU	15	200
HMRHPPALU	HANDMATE REPLACEABLE HEAD PP HOOK ALU	15	170
HMRHSALU	HANDMATE REPLACEABLE HEAD S HOOK ALU	15	160

OTHER TOOLS / TOOL HEADS FOR SPECIFIC APPLICATIONS ON REQUEST.

# HNDMATE<sup>®</sup>

tools that keep you safe

Registered trademark of Dafco

DAFCO NV  
Sluis 2D2 bus 4  
B-9810 Eke  
Tel +32 9 374 71 50  
Fax +32 9 270 30 49  
[www.dafco.be](http://www.dafco.be)

